



weSKATE 3.5 with ISILink - Single User

[Download weSKATE 3.5 Single User](#)

By clicking the link above you will go to the page below:

Click Install

Ice Skating Institute WeSkate35 SingleUser

Name: WeSkate35 SingleUser

Version: 3.5.0.29

Publisher: Ice Skating Institute

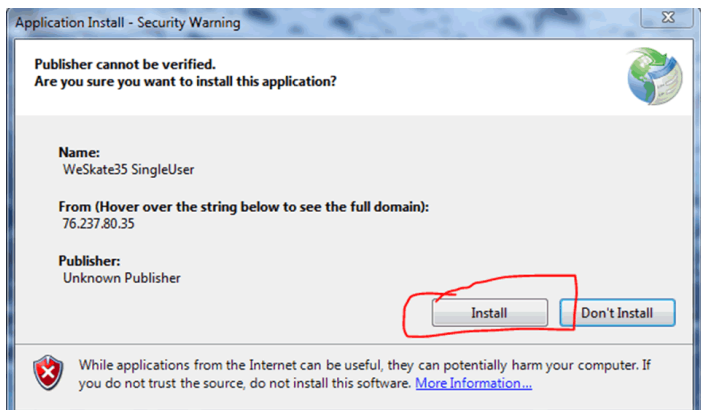
The following prerequisites are required:

- Windows Installer 3.1
- Microsoft .NET Framework 4 (x86 and x64)
- SQL Server Compact 3.5 SP2

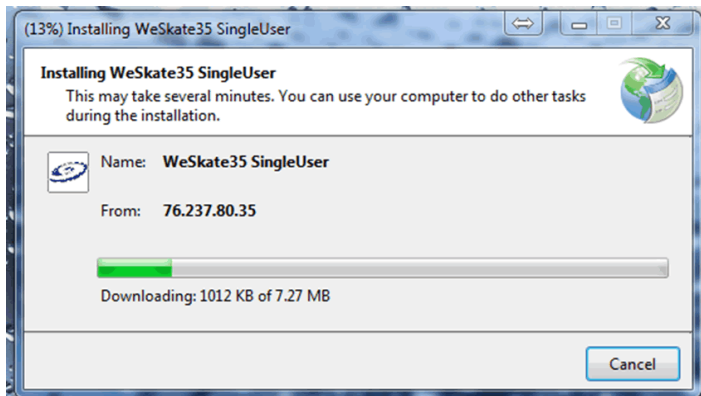
If these components are already installed, you can [launch](#) the application now. Otherwise, click the button below to install the prerequisites and run the application.

Install

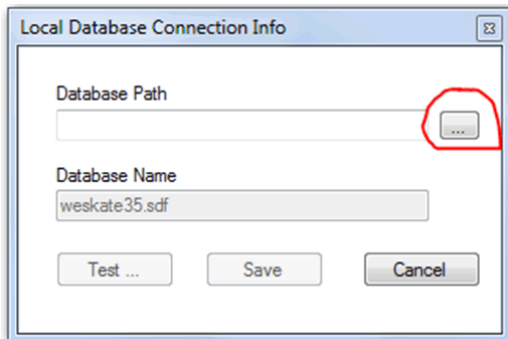
Click Install again



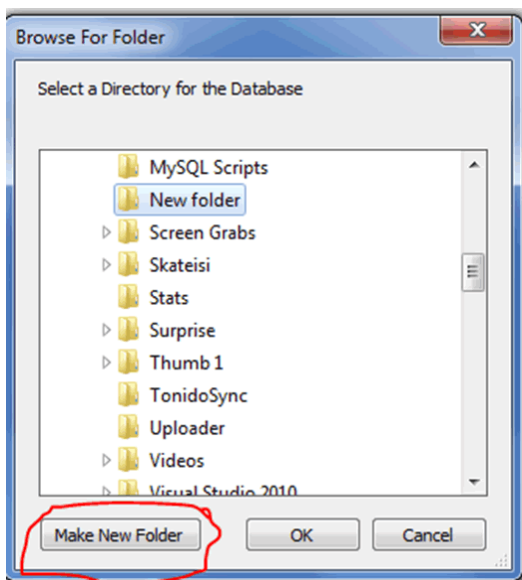
weSKATE 3.5 Single User will install



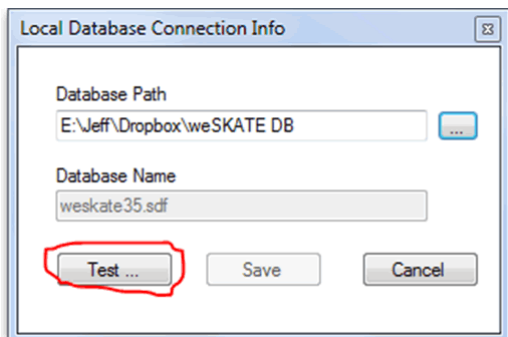
Choose a place for your database to reside



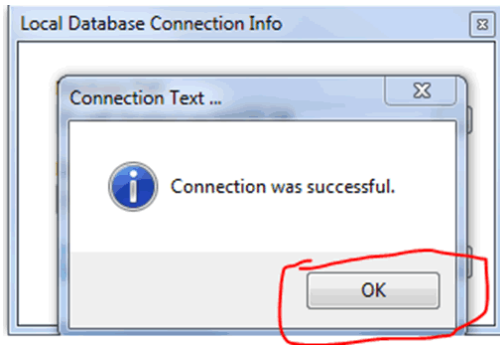
Make a new folder, call it anything (weSKATE DB)



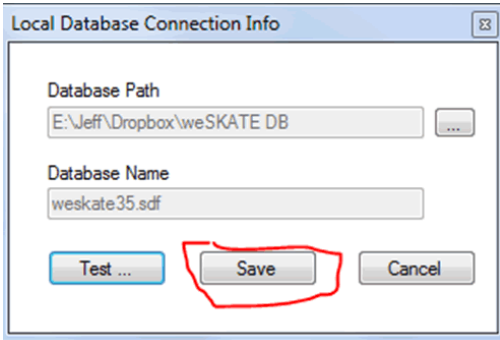
Click Test



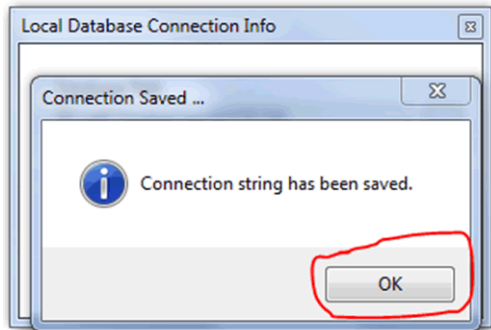
Click OK



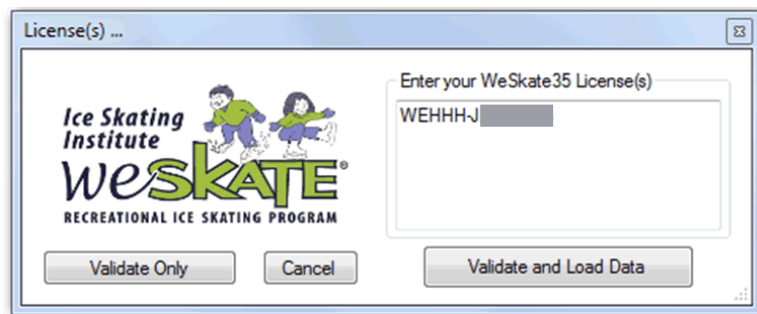
Click Save



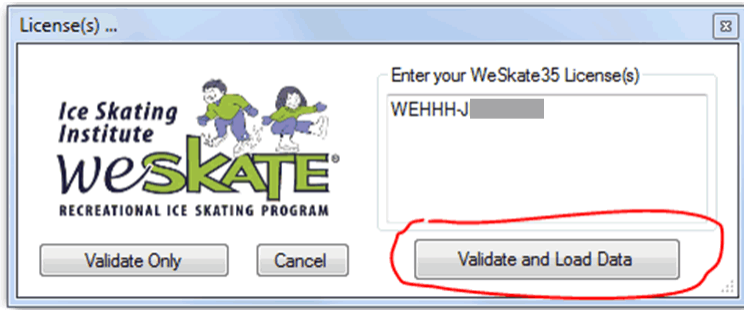
Click OK



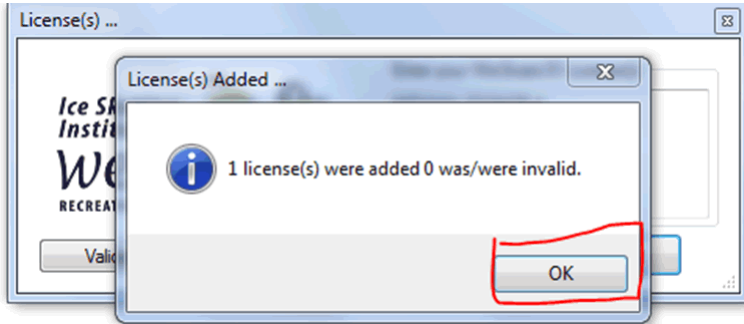
Paste in your weSKATE License(s)



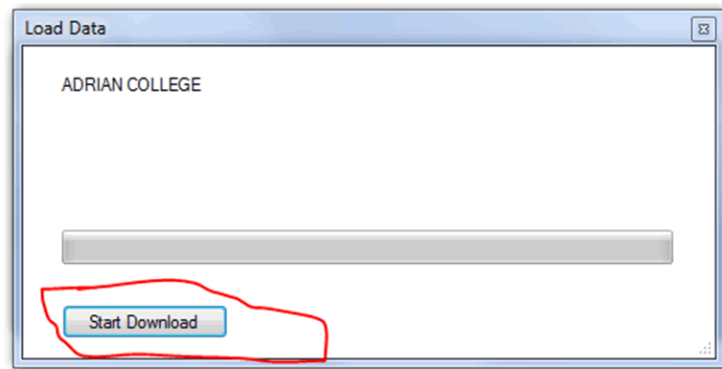
Click Validate and Load Data



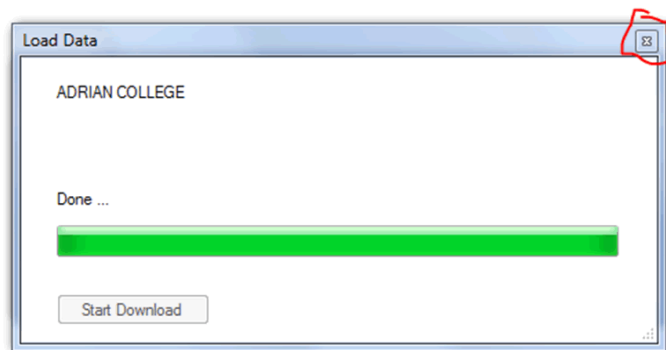
Click OK



Click Start Download



Hit the "X" on the top right of the box



Start using your new weSKATE 3.5

